



# Avinci DX3200

A dedicated 3.2-meter soft signage roll-to-roll printer, Avinci DX3200 produces remarkable print quality and vibrant colors up to 173 m<sup>2</sup>/h for both in- and outdoor soft signage applications.



**AGFA** 

STAY AHEAD. WITH AGFA GRAPHICS.

# Avinci DX3200

*Meet Avinci DX3200 – Agfa Graphics' dedicated soft signage dye sublimation roll-to-roll printer that brings remarkable print quality to a wide range of your in- and outdoor soft signage applications. This advanced soft signage printer is the result of carefully selected features and benefits that combine into one highly productive unit, ready to generate stunning soft signage applications that stand out.*



In-store communication

## Avinci offers you:

- **Large-format**, soft signage applications up to 3.2 m wide.
- **High productivity** and a **robust design** for reliable printing.
- **Low ink** consumption.
- 6 colors (CMYKLCm) for **vibrant prints** and a **wide color gamut**.
- **Excellent print quality** in both text and images.
- Outstanding **print-through** on flags
- Fine **detail** rendering with a resolution up to 1440 x 540 dpi.
- A **wide range** of polyester-based applications.
- A **user-friendly** and **cost-effective** tool.
- A smart and reliable **wind-up system** in every speed mode.
- Off-line calendering to ensure **perfect fixation**.

## Soft signage printing

The Avinci DX3200 allows you to create large-format, soft signage prints of up to 3.2 m wide with a maximum resolution of 1440 x 540 dpi. It's safe to say that the possibilities are almost endless with this dedicated soft signage printer.

Through the process of dye sublimation, this unit produces extremely vivid prints and offers a wide color gamut. Avinci prints directly onto your fabrics. The result? An efficient printing process and soft signage prints that look simply amazing.





## EXCELLENT PRINT QUALITY WITH LOW INK CONSUMPTION

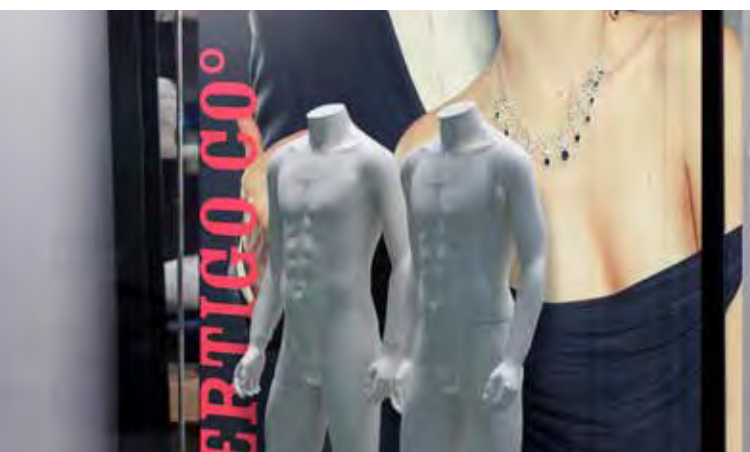
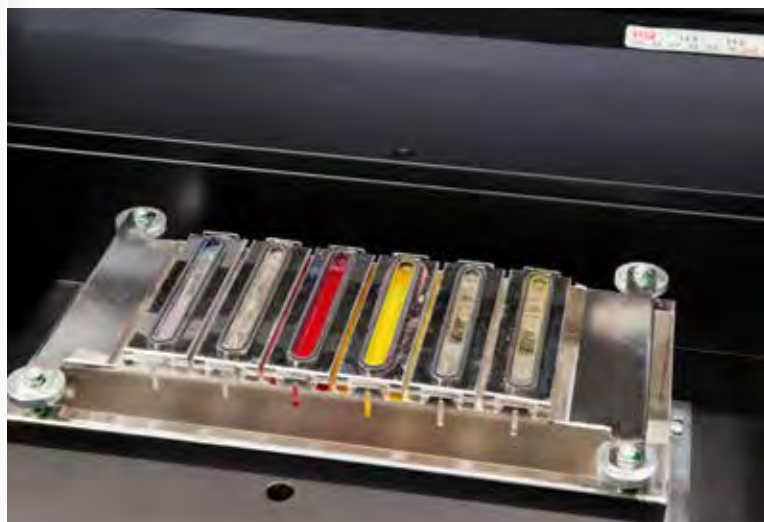
Avinci produces razor-sharp images at a high speed. Moreover, the same quality can be reproduced time after time. Avinci ensures the printing of perfect solids and outstanding tonal rendering with six different colors (CMYKlclm) – a rich color gamut that is particularly noticeable in skin tones, for example.

Thanks to its low ink consumption, Avinci produces excellent results with a minimum of jetted ink volume and waste production. This low ink consumption is based on Agfa Graphics' renowned technology: a smart combination of the ink characteristics and the algorithms that tune the ink quantity and mix to the required image quality mode.

## COUNTLESS POSSIBILITIES

Soft signage is rapidly becoming the preferred solution for many businesses that demand high-quality marketing and display material. And with good reason: opting for this technique is much more user-friendly and cost-effective. Soft signage print results are lighter and easier to transport. Installing them is simple and, moreover, they look incredible.

Avinci can handle a wide variety of polyester-based, soft signage applications such as posters, banners, indoor wall graphics, shop decoration, outdoor advertising, trade show displays, block-outs, backdrops and flags. You name it, Avinci is up to the challenge.



In-store communication



In-store communication

# Avinci: High productivity. Stunning colors.

## DIFFERENT SPEED MODES

It's all about flexibility and quality these days. If you want to achieve maximum results, you have to consider every relevant aspect: cost, time, workload and purpose. And, of course, you aim for high productivity at the best possible price. Depending on your particular requirements and applications, Avinci can reach a speed of up to 173 m<sup>2</sup>/h.

## OFF-LINE CALENDERING

The calendering process in soft signage printing efficiently fixes the colors to the fabric while evaporating the water. If you opt for Avinci, this unit is part of a separate process and your printer will be spared from any mess or damage caused by the sublimation phase. Avinci owners can rest assured: off-line calendering will prove its worth, in terms of both perfect fixation and flexibility in handling.

## EASY AND PRECISE MEDIA FEEDING

Featuring a soft signage-dedicated media transport system, the Avinci engine ensures precise and easy feeding of the media, as well as the perfect wind-up of the print result. Even at the highest production speed, all media are transported flawlessly through the roll-to-roll printer. In this way, they are finished to perfection in moments.

## EASY TO USE

Keep everything moving forward with minimal downtime by benefiting from Avinci's sturdy, low-maintenance build. It only takes one operator to handle the engine and it's a breeze to service print heads, filters, lamps and ink levels with the printer's easily-accessed print shuttle, and smart print heads that deter the formation of ink link clogs and blockages.

## WORLD-CLASS SUPPORT, ANYWHERE YOU NEED IT

Have a question or run into an issue? Agfa Graphics technicians are experienced, accessible and available when you need them, for prompt resolution of any problem or question. You can even access your Avinci remotely, for even greater flexibility in managing jobs and solving problems.



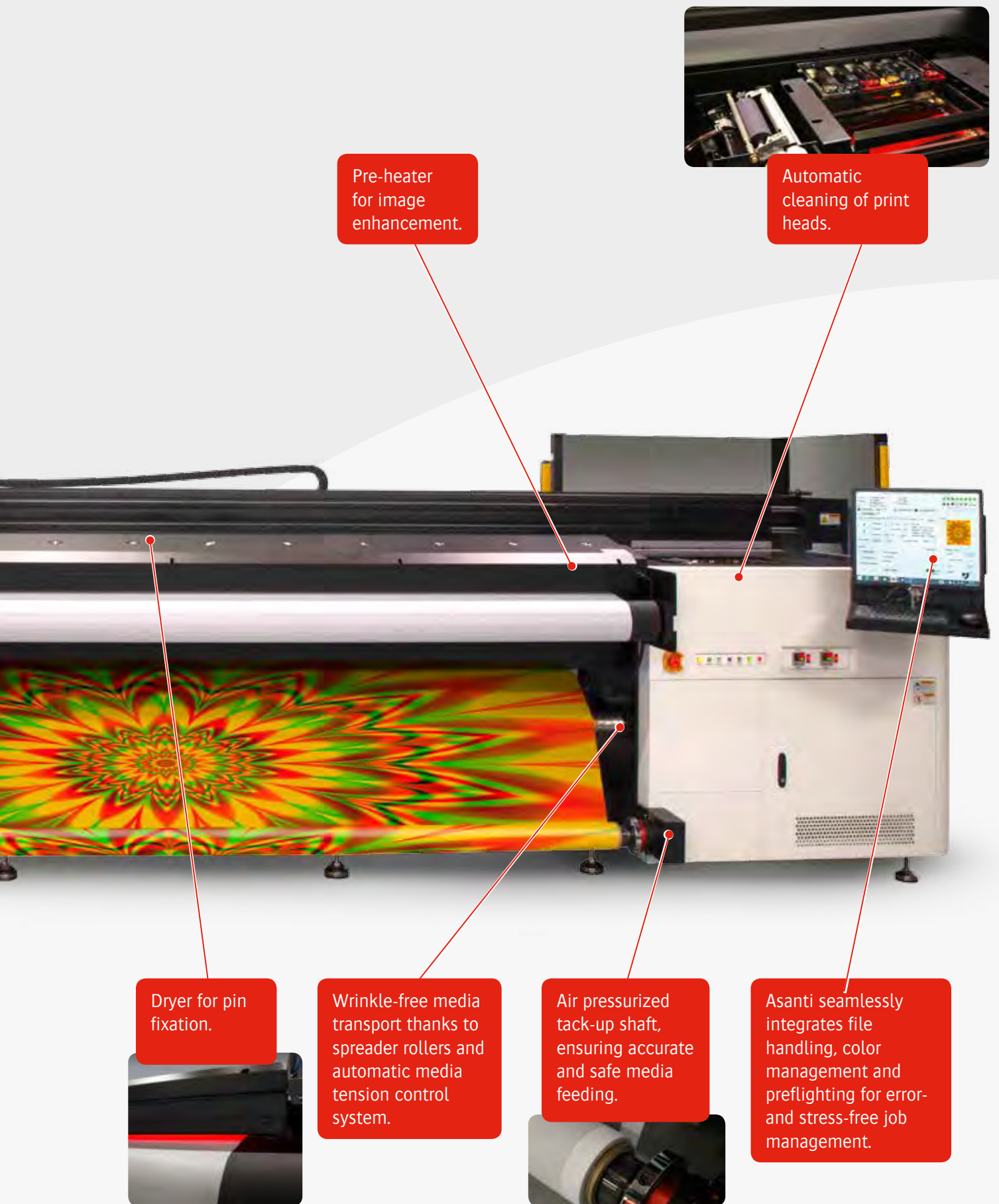
Head height adjustment, allowing Avinci to print on soft signage of up to 5 mm thick.

Pressure sensor gauge and degassing system, guaranteeing stable head operation and meniscus level control.

Crash prevention sensors.

Smart automatic spitting to prevent nozzles from clogging.

Unwinding/rewinding axle for loads of up to 100 kg of 3.2 media.



Pre-heater  
for image  
enhancement.

Automatic  
cleaning of print  
heads.

Dryer for pin  
fixation.

Wrinkle-free media  
transport thanks to  
spreader rollers and  
automatic media  
tension control  
system.

Air pressurized  
tack-up shaft,  
ensuring accurate  
and safe media  
feeding.

Asanti seamlessly  
integrates file  
handling, color  
management and  
preflighting for error-  
and stress-free job  
management.



# Driven by Asanti workflow

*Handling the Avinci DX3200's print process from a to z, Asanti workflow technology optimizes, simplifies and automates prepress, production and finishing steps to make productivity the priority. Asanti seamlessly integrates file handling, color management and preflighting for error- and stress-free job management.*

## Accuracy and consistency

The huge variety of file types to be handled significantly slows down the processing of print jobs and often leads to errors. Asanti overcomes every processing difficulty. As the print settings for different media are stored in a database, Asanti is able to quickly call up the appropriate specifications and apply them – ensuring the same quality across jobs and even print plants. Rendering, image and color quality are automated, and Asanti checks files prior to printing, ensuring that layers and transparency have been handled correctly, while flagging potential issues. By dramatically simplifying the task of the operator, reducing idle time and efficiently tackling issues prior to printing, productivity is increased.

## Straightforward and error-free operations

With Asanti comes a series of value-added features for sign makers such as automated positioning of cutting marks and grommets on banners and the easy design of canvas extensions (like air pockets) for flags. Asanti also includes integrated tiling for the production of giant banners or billboards. Asanti creates mounting instructions and adds the necessary marks on the tiled prints to help the operator mount them swiftly and in the correct way – thus avoiding unnecessary reprint costs.

## Intuitive GUI

The Asanti GUI works with improved visualization of the job layout and positioning: operators can see exactly what they are printing. The GUI offers access to key print parameters to make sure any last-minute changes are simple to apply. Job preparation takes place independently from the Avinci operation due to the client-server infrastructure. This complements the autonomy of the machine beautifully, ensuring operators are not tied to the printer when other tasks demand their attention.

## StoreFront

Avinci DX3200 also comes with StoreFront, a comprehensive web-to-print service. Automated payment processing and error-free print preparation ensure that new jobs are ready for printing in no time and with a minimum of operator intervention.



## Compatible with PrintSphere

The Avinci DX3200 is easily integrated with PrintSphere, Agfa Graphics' software as a service that allows printing companies to automate their workflows, simplifies and accelerates file sharing, and makes collaboration with customers effortless – all while maintaining secure and safe data transfer and storage.



Outdoor communication



In-store communication

# Vivid colors, high performance

## Wide color gamut, no matter the medium

The Avinci inks boast a wide color gamut and high color vibrancy in both indoor and outdoor applications. Providing outstanding adhesion, these inks are your best option in terms of flexibility, image longevity and outdoor resistance. All inks offer outstanding, stable jetting performance and deliver the same high-quality results, batch after batch.

Thanks to the uninterrupted ink supply, the engine can be maximally productive.

## Vivid prints, low ink consumption

Thanks to the high dye load of the inks and the benefits of Asanti's algorithms, ink consumption per square meter is the lowest on the market. The amount of ink needed being one of the most important factors in calculating the cost of ownership for inkjet engines, this is a true asset.



Outdoor communication



In-store communication

## Media &amp; Printing Specifications

## Flexible Media

Max print width	Single roll = 3.20 m (126.0")
Max-Min roll width	Single roll = 3.26 m (128.5")
Maximum length	>100 m length (also depends on the thickness and total roll weight)
Max media thickness	Max. 5 mm (0.19")
Maximum weight	Single roll = 100 kg (220 lbs)
Maximum roll outside diameter	360 mm (14.2")
Roll mounting	Pneumatic shafts for core diameter 7.62 cm - 3" (standard)
Media skew	Max. 2 mm on 10 m printing
Borderless printing flexible media	Single roll = up to 3.2 m (126")
Media transportation	Pre-heater, dancer bars and print plate suction for roll-to-roll

## Productivity

Open fabric: in- & outdoor flags	40 to 173 m <sup>2</sup> /hr (430 to 1862 ft <sup>2</sup> /hr)
Closed fabric: displays	40 to 173 m <sup>2</sup> /hr (430 to 1862 ft <sup>2</sup> /hr)
Closed fabric with diffusion layer: backlit displays	40 to 58 m <sup>2</sup> /hr (430 to 624 ft <sup>2</sup> /hr)

## Media

Media types	Polyester-based applications such as posters, banners, indoor wall graphics, shop decoration, outdoor advertising, trade show displays, and flags
-------------	---------------------------------------------------------------------------------------------------------------------------------------------------

## Print Heads &amp; Inks

Print heads	Piezoelectric Konica Minolta 1024i
Ink	CMYKLcLm
Ink system maintenance	Automatic

## Image &amp; Text Quality

Image quality	Resolution up to 1440 x 540 dpi in high definition
---------------	----------------------------------------------------

## Engine Dimensions &amp; Weight

Printer dimensions & weight (W x D x H)	6190 mm x 1600 mm x 1780 mm 243" x 63" x 70" 1650 kg (3638 lbs)
Crate dimensions & weight (W x D x H)	6490 mm x 1840 mm x 2160 mm 256" x 73" x 85" 2650 kg (5842 lbs)

## Electricity &amp; Compressed Air

Electricity	Engine: single phase 220-240 VAC (50/60 Hz) 12A (Fuse 16A) Dryer: single phase 220-240 VAC (50/60 Hz) 30A (Fuse 32A)
Compressed air	Dry and oil-free (Class 1 according to ISO 8573-1 2010) 200 l/min – 6 Bar

## System Integration RIP / Workflow software

Asanti, PrintSphere, third-party rips
---------------------------------------