

# Asanti

**Advanced yet easy-to-use Sign & Display workflow software that streamlines and automates wide-format color management and printing processes.**



STAY AHEAD. WITH AGFA GRAPHICS.

# Asanti

In a world where time is money, Sign & Display producers need streamlined, automated processes that deliver nothing less than sublime end results. Enter Asanti – advanced yet easy-to-use workflow software for wide-format printing.

## Streamline your workflow

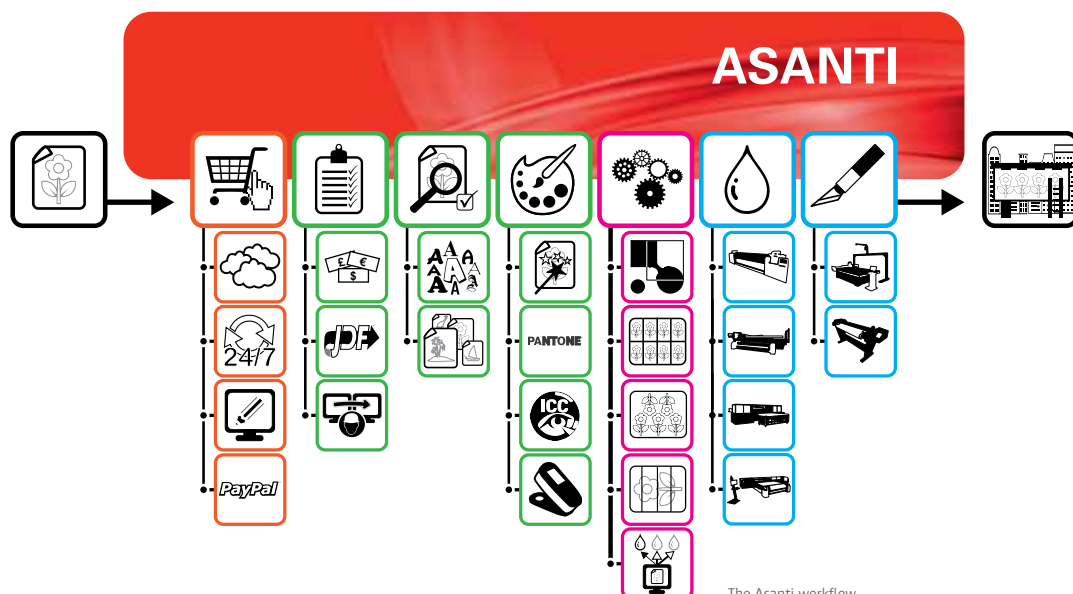
Asanti is a complete, automated Sign & Display production hub and workflow tool featuring Agfa Graphics' unique and award-winning color management solution, integration with the latest version of Adobe PDF Print Engine (APPE), highly specific application functionalities (e.g. nesting, see-through concept, proofing support) and fast, automatic pre-flighting. Streamline your workflow with Asanti and you'll avoid errors, minimize manual interventions, shorten pre-press procedures and simplify your entire printing process. The result? A fully accountable end-to-end quality and data management solution that boosts your business.



Asanti: multiple winner of EDP Awards (European Digital Press)

## Key benefits

- One tool to manage all your print data and devices, from Agfa Graphics printers and cutters to third-party equipment.
- Built-in Agfa Graphics color management, for consistent color quality and reproduction with minimal effort.
- Automatic pre-flighting, PDF checking and managing of your entire printing process.
- Integrated solution for increased productivity and reliable, predictable and high-quality output.
- Integration with Asanti StoreFront web-to-print, Adobe PDF Print Engine (APPE) and PrintSphere.
- Intuitive user interface to manage everything from a single digital environment.



The Asanti workflow

## ***Time is money, convenience is key***

### ***Automation and pre-flighting***

As a scalable workflow tool that distributes input from various sources over multiple hardware systems, Asanti promotes productivity, efficiency and a centralized way of working. Moreover, it optimizes production through specific automation tools (e.g. nesting, tiling, media handling, parameter presets, smart DQS possibilities), automated file intake (e.g. Asanti StoreFront) and powerful pre-flighting.

Asanti's pre-flighting demonstrates its worth in time and cost savings by reducing idle time on printers, standardizing processes and avoiding errors. Automatic checking of PDF files and job validation catch potential issues at an early stage and ensure that all print data is handled correctly. Needless to say, this results in better quality control, faster turnaround and less waste.

### ***Intuitive user interface***

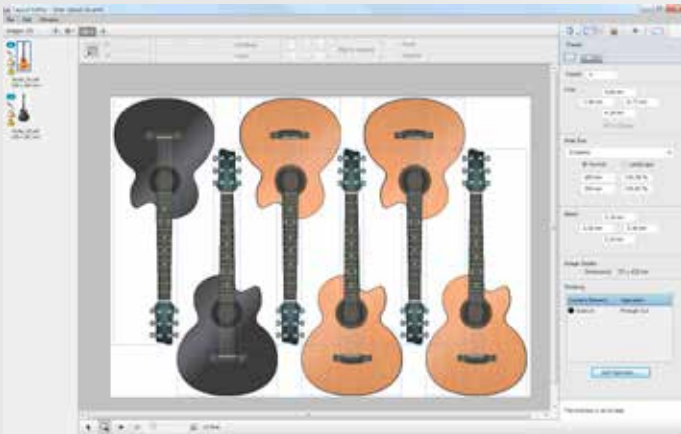
Asanti's easy-to-use, intuitive GUI features improve job layout and positioning visualization; operators can see exactly what they are printing and have easy access to key print parameters to make sure last-minute changes are applied swiftly. The GUI also shows print progress and printing time estimations. The latest update of Asanti offers a specialized new production dashboard displaying all print jobs, the number of prints, statuses of multiple engines, ink levels, elapsed time and more – all in one advanced digital environment. It's the perfect HTML5-based tool for those in close contact with clients and financial connections.

Another plus when it comes to Asanti's usability, the new user interface for tiling enables the organization of highly complex projects while keeping things simple for print producers. It even adds instructions for installation (the mounting sequence) directly from the print job.

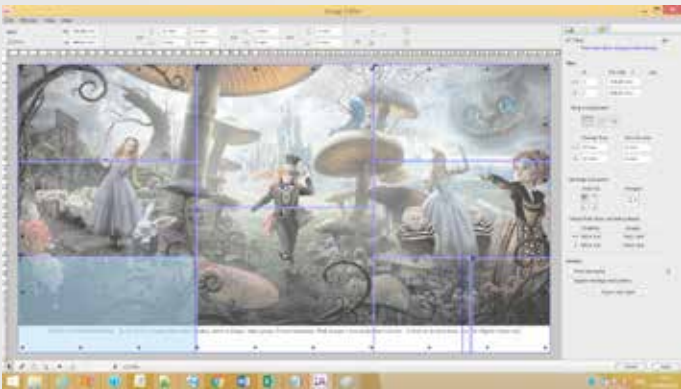
### ***Modular structure***

The Asanti suite consists of several modules. Asanti is complemented by Asanti StoreFront, for example, a cloud-based web-to-print system that requires minimal up-front investment. This online shopping solution is designed to help users grow their businesses and explore new markets, handling incoming orders via its dashboard and integrating seamlessly with Asanti Production.

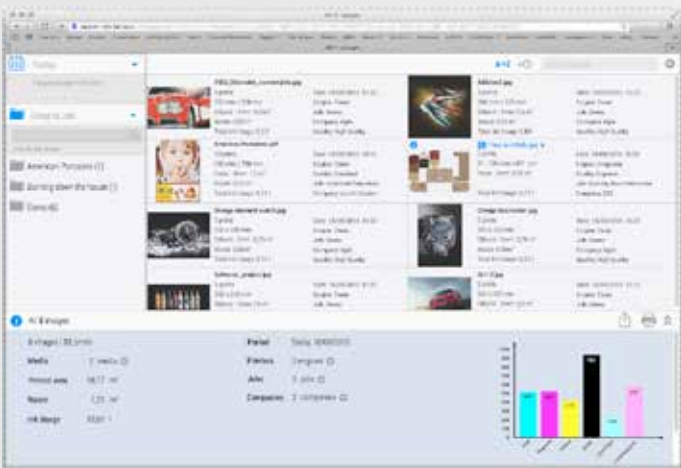
Asanti Render uses the latest Adobe PDF Print Engine (APPE) to render files for a wide range of large-format printers. If you are looking for even more automation, then you should definitely consider Asanti Production. It includes automatic media optimization and template-based production. And you have a palette of additional Asanti Enhancers at your disposal to further expand your output possibilities.



True shape nesting view options



Interactive setup with grommets



Production dashboard Summary pane



## Rendering quality, our top priority

### Color management

Guaranteeing color consistency and reproduction, Agfa Graphics' intelligent and award-winning color management solution was developed to offer print producers a combination of outstanding print quality and incredible printing speed. It features, for example, calibrated print modes, spot color conversion based on Pantone libraries and patented technology of regularized profiles that ensures smooth vignettes.

New to Asanti Color Management is the advanced mode that allows you to manage colors manually and shorten throughput time. It also features new white printing possibilities, as well as an overrule on spot colors to reproduce precisely correct pigments, even on challenging media.

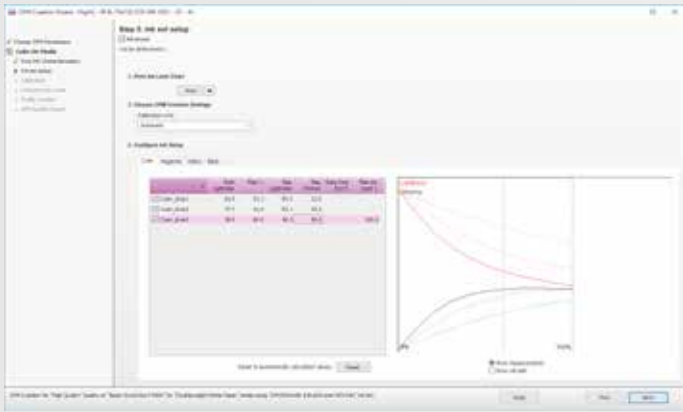
### Accuracy and consistency

Leave it to Asanti to make sure each and every print element is correct – from color through profiling to output requirements. Even when PDF files are delivered in an undefined color space, SISR (Smart Input Space Recognition) ensures high-quality end results. As a cutting-edge production hub, Asanti generates color settings and controls them automatically, maintaining correct emulation of spot colors and minimizing Delta E parameters for multi-device consistency.

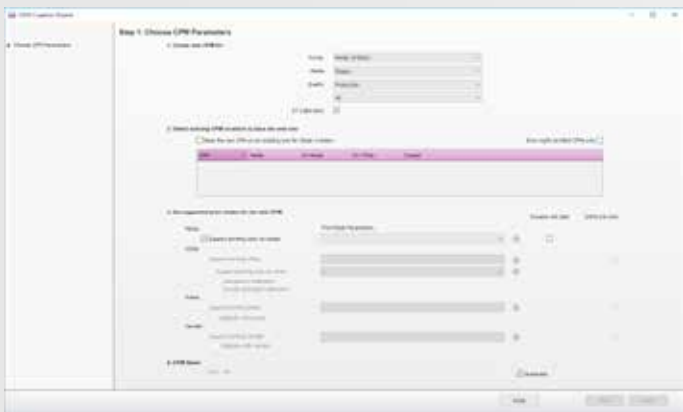
Optimizing your entire production process, this unique workflow software offers end-to-end quality for predictable results and reliable, accurate color fidelity and performance. It features full compatibility with pre-determined ICC profiles, the ability to generate custom profiles and convenient proofing support.

### IntelliTune for Sign & Display

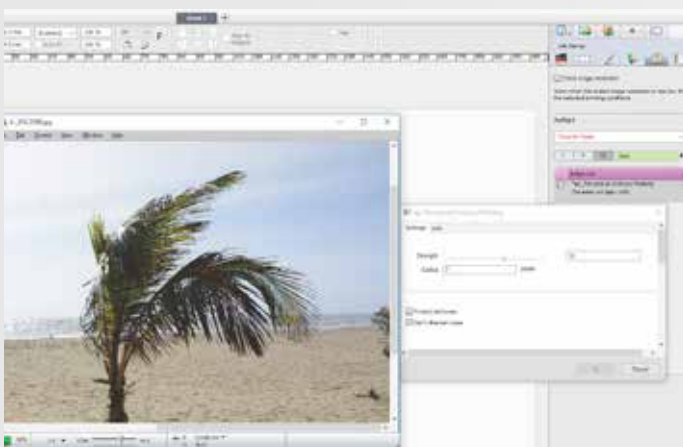
The latest edition of Asanti allows you to automatically analyze and improve image quality with IntelliTune. This feature not only eliminates noise, staircasing and blurriness; it also optimizes skin tones based on extensive research and analysis. Truly unique in the world of Sign & Display, IntelliTune is fully integrated into Asanti and contributes to the simplification of your workflow.



Integrated QMS



G7 support

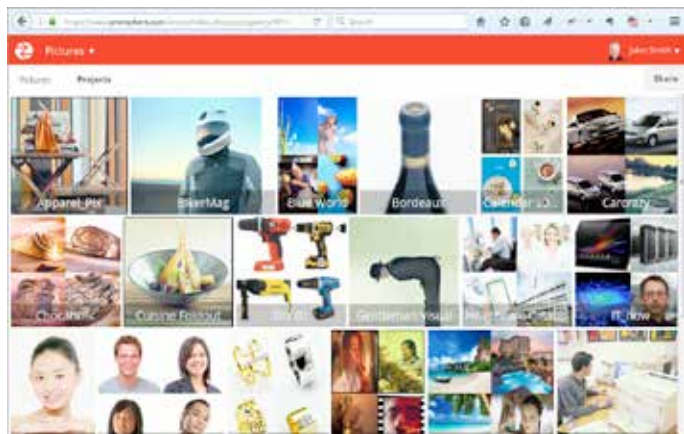
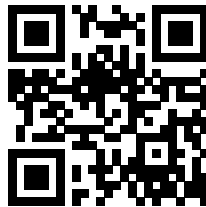


IntelliTune - unsharp masking



Asanti StoreFront variable data

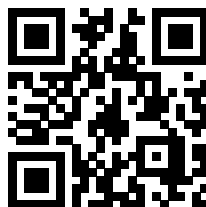
Scan the QR code  
to get more information  
on StoreFront



The built-in image viewer provides a handy overview of all images.

Clicking an image enlarges it.

Scan the QR code  
to get more information  
on PrintSphere



## Integration and versatility

### Integrating functions

Asanti's functionality results in optimal compatibility with other software tools, hardware devices and third-party print production systems.

It easily integrates with Agfa Graphics' Asanti StoreFront and PrintSphere, for example. Using a standardized JDF-compliant job ticketing system, Asanti also controls and automates everything from start to finish, regardless of output device. Full integration with RIPs and other production systems further enhances its functionality.

### Driving multiple devices

Today's wide-format specialists often own multiple print devices and use different ink formulations, which makes generating consistent print results regardless of machine width, ink colors or print media quite challenging.

Asanti, however, manages these differences in a transparent manner, making it easy to drive engines of all sizes and types, from a variety of different manufacturers.

### Perfect for Jeti Tauro

The Jeti Tauro is Agfa Graphics' 2.5 m-wide, high-end, hybrid and six-color plus white/primer UV inkjet printer. It is especially suited for integration with Asanti, which then streamlines the entire workflow by dramatically reducing the margin of error, thus shortening pre-press procedures. This is achieved by transferring all necessary print settings of each job to the Jeti Tauro, which automatically applies them. The GUI offers access to key print parameters to make sure any last minute changes can be applied quickly and easily.

### The power of APPE

Asanti's integration of the latest Adobe PDF Print Engine (APPE) allows for new levels of freedom and creativity. For example, it manages the generation of PDF master files while eliminating the need for manual intervention during the workflow process. Furthermore, device-dependent processes are driven by instructions within APPE, with PDF technology ensuring end-to-end consistency across all devices.

## *Discuss and exchange ideas: AsantiNetwork*

Discover a wealth of knowledge on AsantiNetwork, the official online community for Asanti users. Interesting facts and information covering a wide range of technology topics, tips and tricks, release notes, user guides, software, downloads and more – AsantiNetwork is there to help and inspire you.

Even more, it hosts an online database that includes brochures, product movies and computer-based trainings, and a user forum where users can discuss and exchange ideas about various Asanti topics.

<https://asanti.agfa.net/>



[www.agfagraphics.com](http://www.agfagraphics.com)